

Conservation



20/20

Mid-1990's Increased Awareness of Growth Impacts

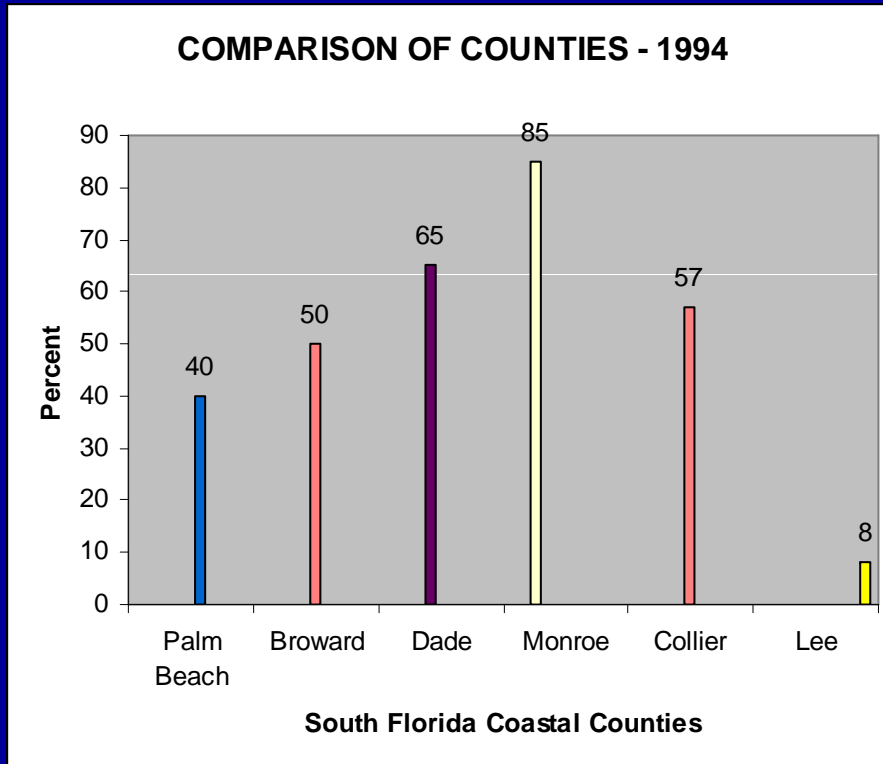
Growth



Cherished open spaces began to disappear



In 1996, Lee County had an estimated **8%** of its land area preserved for conservation purposes



> **50%** (1996)

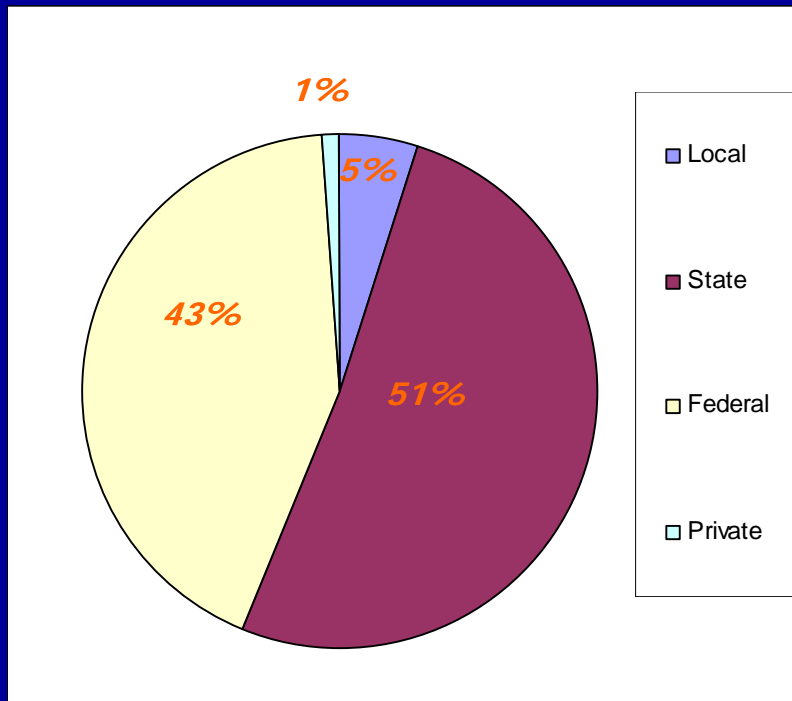
> **21.4%** (1996)

> Excludes local and private lands

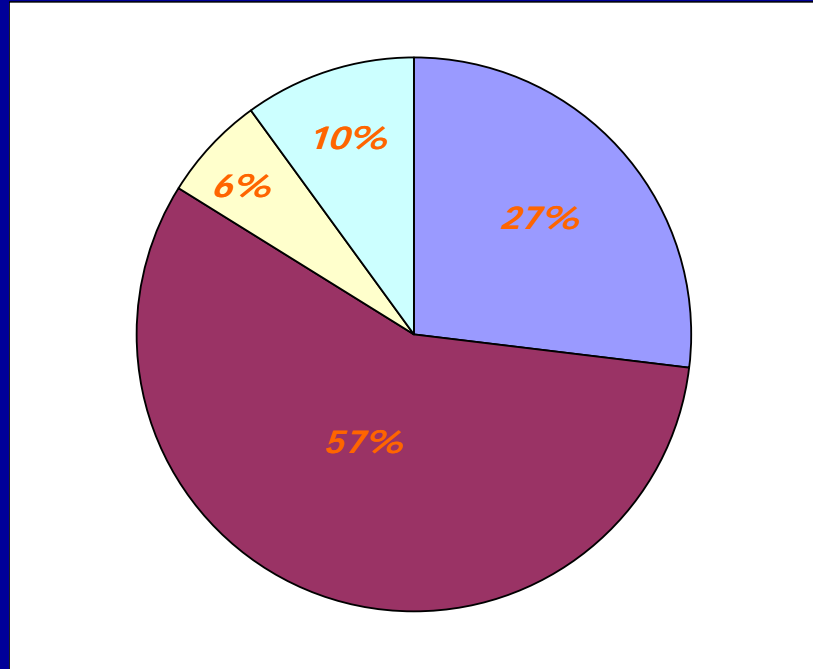
DISTRIBUTION OF CONSERVATION LAND BY MANAGING AGENCY

FNAI, 2009

STATE OF FLORIDA



LEE COUNTY



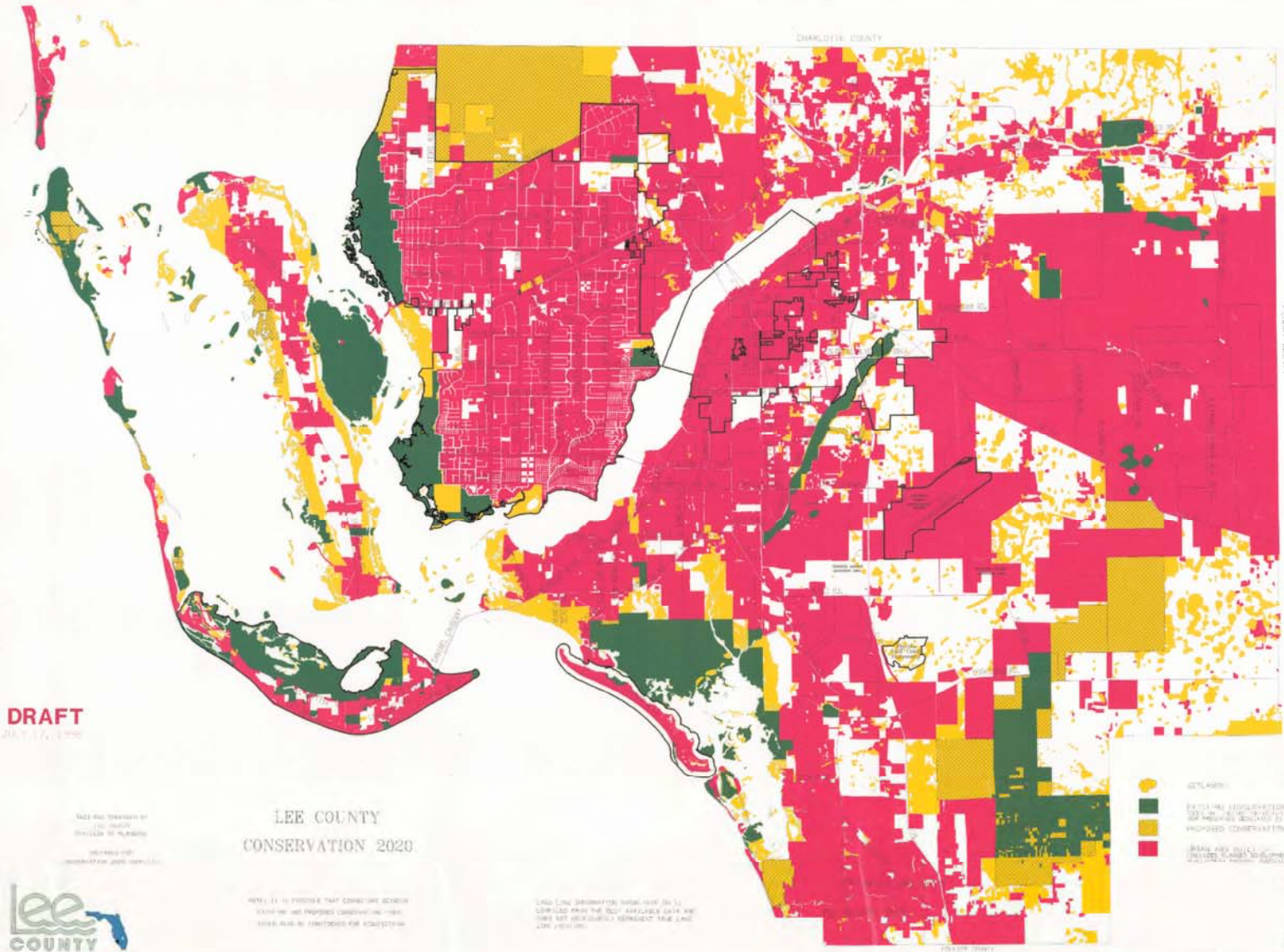
DRAFT

JULY 17, 1996

CHARLOTTE COUNTY

SPINNAKER COUNTY

CLAY COUNTY



DRAFT

JULY 17, 1996

THIS PLAN TRANSMITS BY THE COUNTY ENGINEER TO PLANNING AND ZONING DEPARTMENT FOR PUBLIC COMMENT.

LEE COUNTY
CONSERVATION 2020

NOTE: IT IS PROVIDED THAT CONSERVATION SERVICE CONTRACTS ARE NOT FINANCED THROUGH THE STATE AND ARE LIMITED TO CONSERVATION PURPOSES.

LAND USE DESIGNATION INFORMATION IS TO BE DERIVED FROM THE BEST AVAILABLE DATA AND DOES NOT NECESSARILY REPRESENT TRUE LAND USE VALUES.

- LEGEND:
- WETLANDS
 - EXISTING AND PROPOSED CONSERVATION LANDS
 - OTHER LAND USES



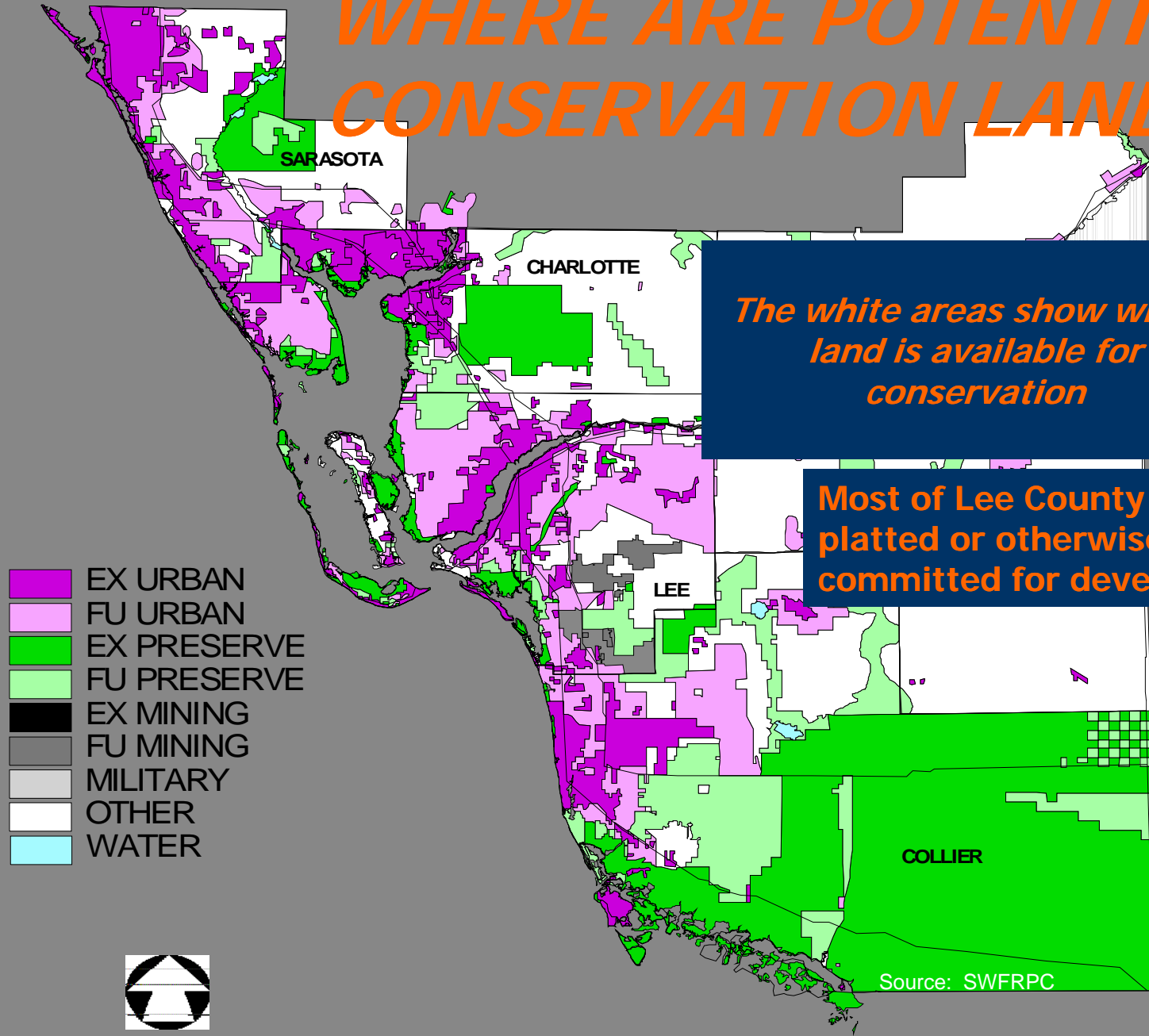
0 1 2
MILES OR KILOMETERS



DRAFT

JULY 17, 1996

WHERE ARE POTENTIAL CONSERVATION LANDS?



The white areas show where land is available for conservation

Most of Lee County is platted or otherwise committed for development

Source: SWFRPC



1996 OFFICIAL BALLOT ITEM

Are you willing to increase
property taxes by
0.5 mil (\$.50/\$1,000) to
buy, restore and maintain
Conservation Land in Lee
County?



AUDUBON CONSERVATION 20/20 COMMITTEE

PASSED

In Favor



Enabling Ordinance Requirements

- Program to be run by 15-member citizen advisory committee
- There will be no power of eminent domain used
- Land acquired must be eligible for mitigation
- Defines Conservation Lands
 - Large enough size for effective management
 - Wildlife Habitat or rare/unique plant communities
 - Water resource Benefits
 - Appropriate public use

CONSERVATION LAND ACQUISITION AND STEWARDSHIP Advisory Committee to the Board of County Commissioners (15 members)

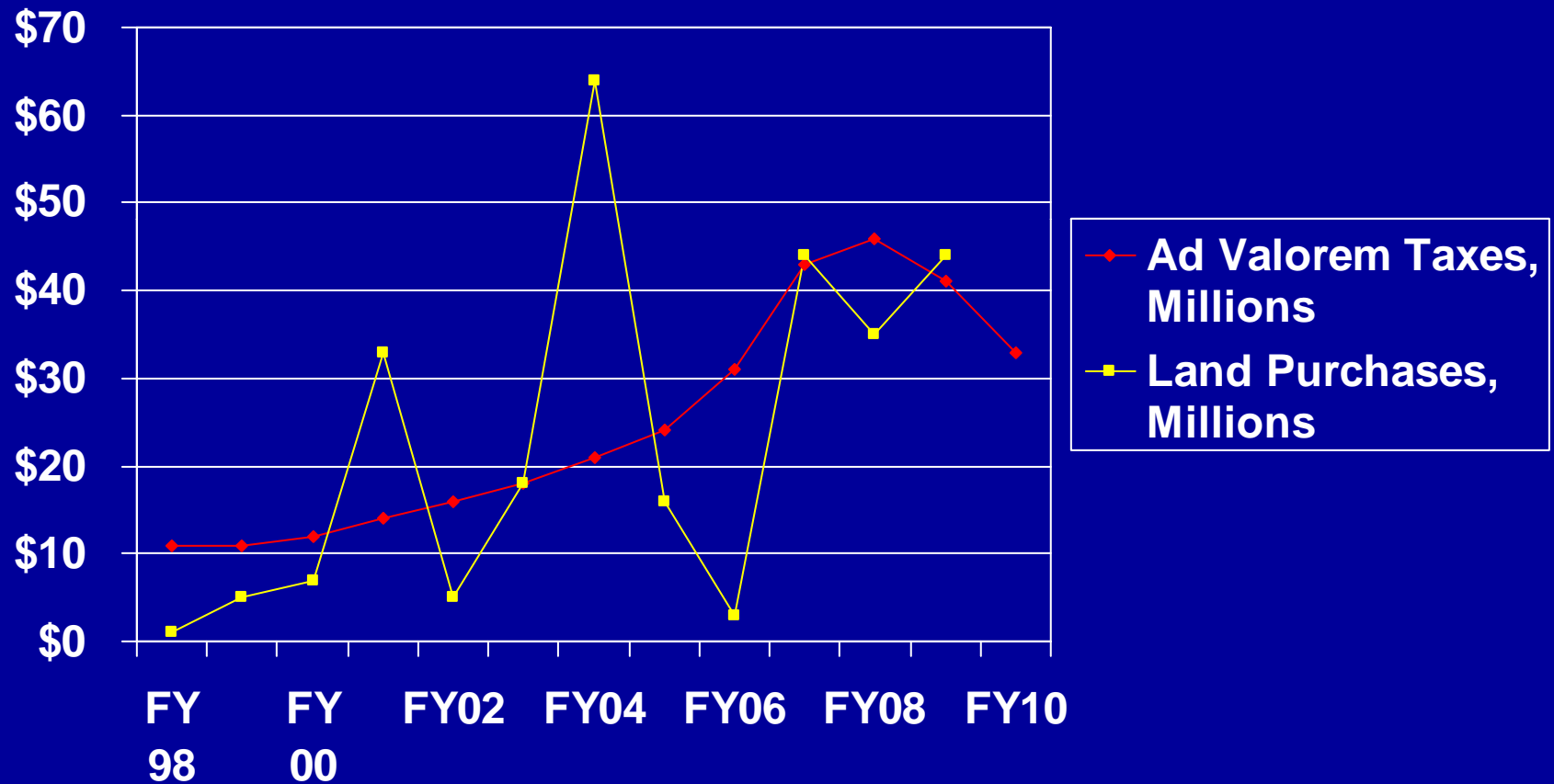


- Establish program criteria and a two-step review process
- Create a willing seller nomination form for staff to distribute
- Conduct Initial Review to eliminate less desirable nominations
- After secondary review, recommend nominations to be pursued for acquisition
- Oversee management of preserves

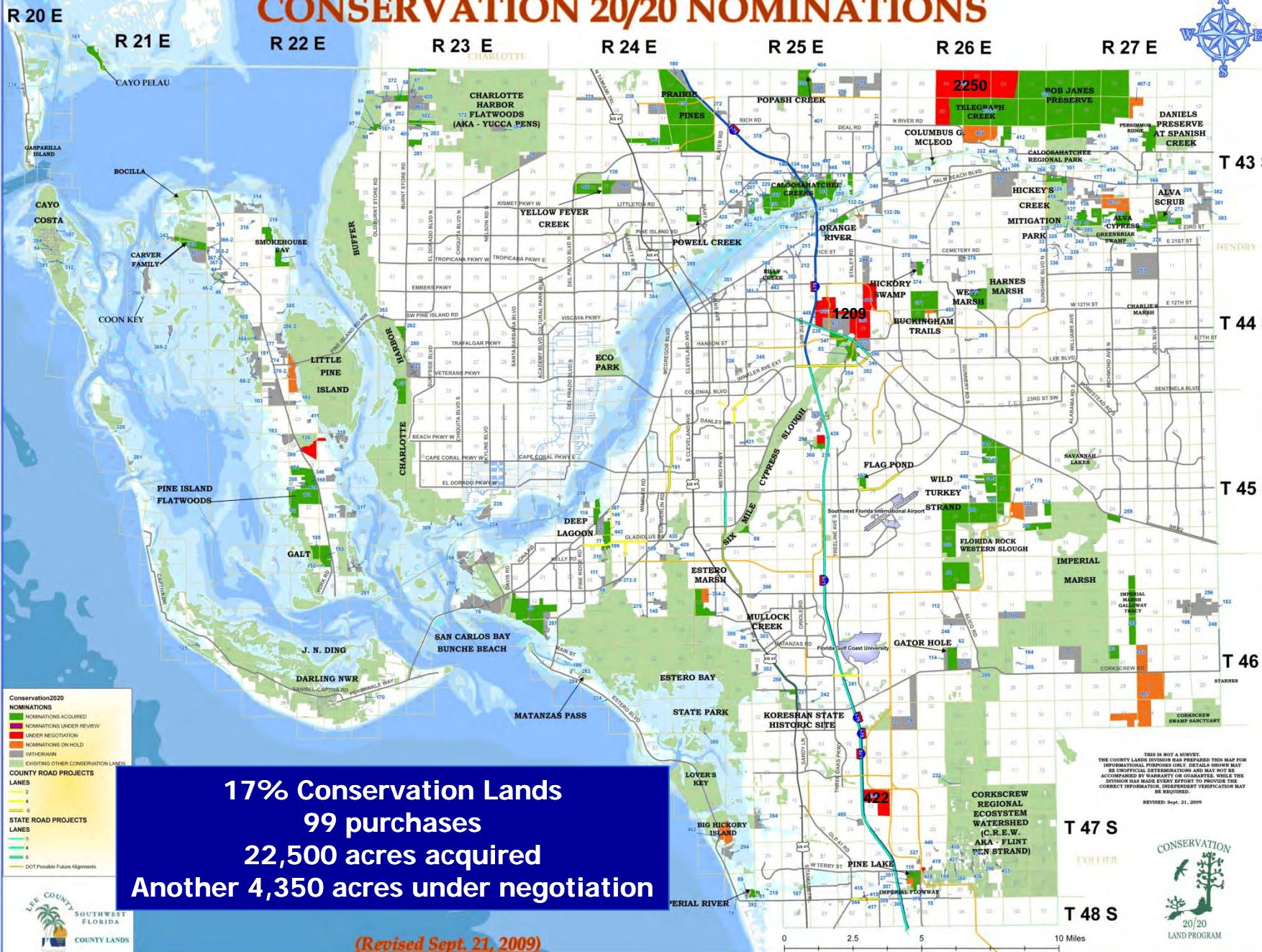
Management



Expenses/Revenues



CONSERVATION 20/20 NOMINATIONS



Conservation20/20
NOMINATIONS
 ■ NOMINATIONS ACQUIRED
 ■ NOMINATIONS UNDER REVIEW
 ■ UNDER NEGOTIATION
 ■ NOMINATIONS ON HOLD
 ■ VETERAN
 ■ EXISTING OTHER CONSERVATION LANDS

COUNTY ROAD PROJECTS
 LANES
 2
 4
 6

STATE ROAD PROJECTS
 LANES
 2
 4
 6
 DOT Possible Future Alignments

17% Conservation Lands
99 purchases
22,500 acres acquired
Another 4,350 acres under negotiation

(Revised Sept. 21, 2009)

THIS IS NOT A SURVEY.
 THE COUNTY LANDS DIVISION HAS PREPARED THIS MAP FOR INFORMATIONAL PURPOSES ONLY. DETAILS SHOWN MAY BE DIFFERENTIAL. REPRESENTATIONS AND MAY NOT BE ACCOMPANIED BY WARRANTY OR GUARANTEE. WHILE THE DIVISION HAS MADE EVERY EFFORT TO PROVIDE THE CORRECT INFORMATION, INDEPENDENT VERIFICATION MAY BE REQUIRED.

REVISED: Sept. 21, 2009



CONSERVATION



20/20
LAND PROGRAM



[Home](#) | [About](#) | [News](#) | [Calendar](#) | [Preserves](#) | [Stewardship](#) | [Downloads](#) | [Gallery](#)

Bob Janes Preserve



[Get Directions!](#)

Bob Janes Preserve
Access Undetermined
Alva, Florida 33920

Total Acres: 5620.37

Number of Parcels: 1

Total Cost: \$41,538,620.00

Date Acquired: Monday, July 31, 2006*

*Date first parcel was acquired.

[Additional Acquisition Information](#)
[Land Stewardship Plan](#)

Coordinator: Cathy Olson
Telephone: (239) 533-7455

Lee County and the State of Florida partnered to purchase a portion of the former Babcock Ranch; now a 73,236 acre preserve in Lee and Charlotte Counties. Lee County purchased and holds title to all of the Babcock Ranch Preserve within Lee County. On June 30, 2009 the Lee County portion of the preserve was renamed Bob Janes Preserve by the Board of County Commissioners in order to honor and recognize all of the hard work Commissioner Janes put into the acquisition of this preserve. Although owned by different entities, the entire preserve will be managed holistically as one preserve. The stewardship of the preserve is guided by the Conceptual Management Plan. Unlike typical Conservation 20/20 preserves, a certain amount of intensive agriculture (cow

Pretty flowers found on C20/20 Preserves



Bird watching on C20/20 Preserves

